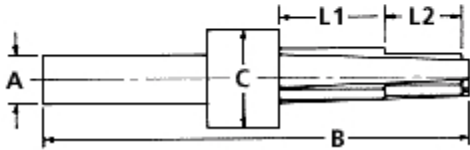
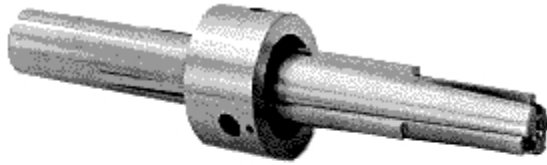


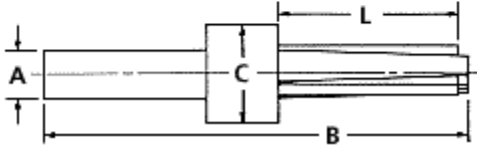
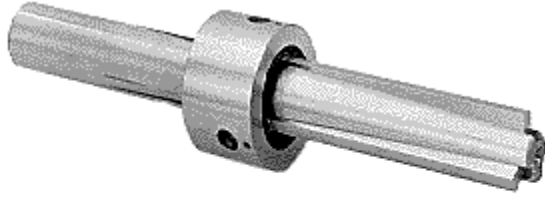
TYPE A – Extra Wide Range



Measurements in Inches		
Model	Expansion	
No.	Range	Total
0A	0.375 to 0.500	0.125
1A	0.500 to 0.750	0.250
2A	0.750 to 1.000	0.250
3A	1.000 to 1.500	0.500
4A	1.500 to 2.000	0.500
5A	2.000 to 2.500	0.500
6A	2.500 to 3.000	0.500
7A	2.000 to 3.000	1.000
8A	3.000 to 4.000	1.000
9A	4.000 to 5.000	1.000
10A	5.000 to 6.000	1.000
11A	6.000 to 7.000	1.000
16A	3.000 to 3.500	0.500
17A	3.500 to 4.000	.500
18A	4.000 to 4.500	.500
19A	4.500 to 5.000	.500
20A	5.000 to 5.500	.500
21A	5.500 to 6.000	.500
22A	6.000 to 6.500	.500
23A	6.500 to 7.000	.500

Measurements in Millimeters		
Model	Expansion	
No.	Range	Total
0A	9.53 to 12.70	3.18
1A	12.70 to 19.05	6.35
2A	19.05 to 25.40	6.35
3A	25.40 to 38.10	12.70
4A	38.10 to 50.80	12.70
5A	50.80 to 63.50	12.70
6A	63.50 to 76.20	12.70
7A	50.80 to 76.20	25.40
8A	76.20 to 101.60	25.40
9A	101.60 to 127.00	25.40
10A	127.00 to 152.40	25.40
11A	152.40 to 177.80	25.40
16A	76.20 to 88.90	12.70
17A	88.90 to 101.60	12.70
18A	101.60 to 114.30	12.70
19A	114.30 to 127.00	12.70
20A	127.00 to 139.70	12.70
21A	139.70 to 152.40	12.70
22A	152.40 to 165.10	12.70
23A	165.10 to 177.80	12.70

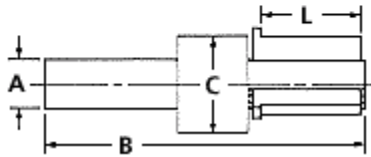
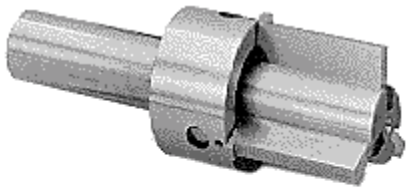
TYPE B – Extra Long Jaws



Measurements in Inches		
Model	Expansion	
No.	Range	Total
0B	0.437 to 0.500	0.063
3B	0.625 to 0.750	0.125
4B	0.750 to 0.875	0.125
5B	0.875 to 1.062	0.188
6B	1.062 to 1.250	0.188
7B	1.250 to 1.500	0.250
8B	1.500 to 1.750	0.250
9B	1.750 to 2.000	0.250
10B	2.000 to 2.250	0.250
11B	2.250 to 2.500	0.250
12B	2.500 to 2.750	0.250
13B	2.750 to 3.000	0.250
14B	3.000 to 3.250	0.250
15B	3.250 to 3.500	0.250

Measurements in Millimeters		
Model	Expansion	
No.	Range	Total
0B	11.10 to 12.70	1.60
3B	15.88 to 19.05	3.18
4B	19.05 to 22.23	3.18
5B	22.23 to 26.97	4.78
6B	26.97 to 31.75	4.78
7B	31.75 to 38.10	6.35
8B	38.10 to 44.45	6.35
9B	44.45 to 50.80	6.35
10B	50.80 to 57.15	6.35
11B	57.15 to 63.50	6.35
12B	63.50 to 69.85	6.35
13B	69.85 to 76.20	6.35
14B	76.20 to 82.55	6.35
15B	82.55 to 88.90	6.35

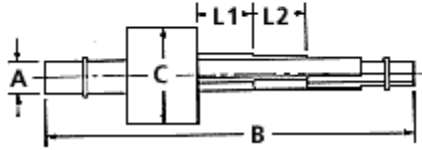
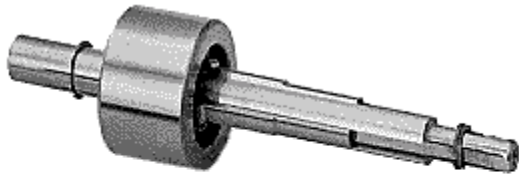
TYPE C - Compact



Measurements in Inches		
Model	Expansion	
No.	Range	Total
3C	0.625 to 0.750	0.125
4C	0.750 to 0.875	0.125
5C	0.875 to 1.000	0.125
6C	1.000 to 1.188	0.188
7C	1.188 to 1.375	0.188
8C	1.375 to 1.562	0.188
9C	1.562 to 1.750	0.188
10C	1.750 to 2.000	0.250
11C	2.000 to 2.250	0.250
12C	2.250 to 2.500	0.250
13C	2.500 to 2.750	0.250
14C	2.750 to 3.000	0.250
15C	3.000 to 3.250	0.250
16C	3.250 to 3.500	0.250
17C	3.500 to 3.750	0.250
18C	3.750 to 4.000	0.250
19C	4.000 to 4.250	0.250
20C	4.250 to 4.500	0.250
21C	4.500 to 4.750	0.250
22C	4.750 to 5.000	0.250
23C	5.000 to 5.250	0.250
24C	5.250 to 5.500	0.250
25C	5.500 to 5.750	0.250
26C	5.750 to 6.000	0.250
27C	6.000 to 6.250	0.250
28C	6.250 to 6.500	0.250
29C	6.500 to 6.750	0.250
30C	6.750 to 7.000	0.250

Measurements in Millimeters		
Model	Expansion	
No.	Range	Total
3C	15.88 to 19.05	3.18
4C	19.05 to 22.23	3.18
5C	22.23 to 25.40	3.18
6C	25.40 to 30.18	4.78
7C	30.18 to 34.93	4.78
8C	34.93 to 39.67	4.78
9C	39.67 to 44.45	4.78
10C	44.45 to 50.80	6.35
11C	50.80 to 57.15	6.35
12C	57.15 to 63.50	6.35
13C	63.50 to 69.85	6.35
14C	69.85 to 76.20	6.35
15C	76.20 to 82.55	6.35
16C	82.55 to 88.90	6.35
17C	88.90 to 95.25	6.35
18C	95.25 to 101.60	6.35
19C	101.60 to 107.95	6.35
20C	107.95 to 114.30	6.35
21C	114.30 to 120.65	6.35
22C	120.65 to 127.00	6.35
23C	127.00 to 133.35	6.35
24C	133.35 to 139.70	6.35
25C	139.70 to 146.05	6.35
26C	146.05 to 152.40	6.35
27C	152.40 to 158.75	6.35
28C	158.75 to 165.10	6.35
29C	165.10 to 171.45	6.35
30C	171.45 to 177.80	6.35

TYPE M – Extra Small Sizes



Measurements in Inches		
Model	Expansion	
No.	Range	Total
1MA	0.250 to 0.313	0.063
2MA	0.313 to 0.375	0.063
1MB	0.250 to 0.281	0.032
2MB	0.281 to 0.313	0.032
3MB	0.313 to 0.344	0.032
4MB	0.344 to 0.375	0.032

Measurements in Millimeters		
Model	Expansion	
No.	Range	Total
1MA	6.35 to 7.95	1.60
2MA	7.95 to 9.55	1.60
1MB	6.35 to 7.15	0.80
2MB	7.15 to 7.95	0.80
3MB	7.95 to 8.75	0.80
4MB	8.75 to 9.55	0.80